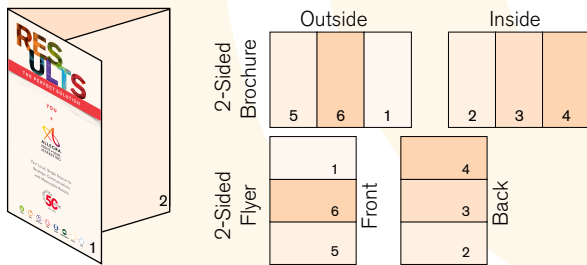


# Folding Guidelines

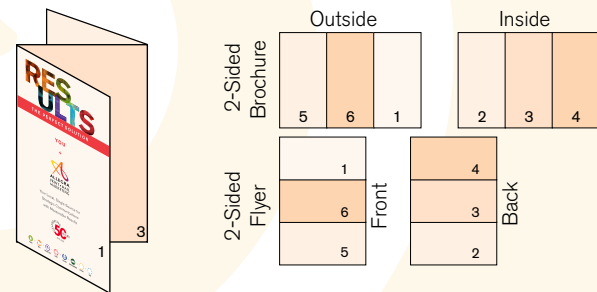
Designing your project to work best within your choice of folding.



**Letter-fold / Tri-fold** - Outside panels are slightly larger  
 Paper is folded in thirds (ex. 8.5" x 11" folds to 3.6875" x 8.5", and fits into a standard #10 envelope). A letter-fold has a slightly smaller panel to ensure that it folds nicely and doesn't hit the fold of the other panels.

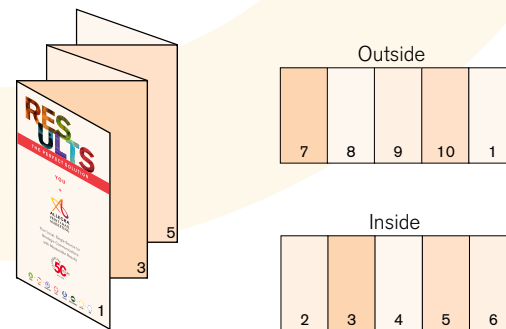


**Z-fold** - All panels are the same size  
 Paper is folded in thirds, accordion style (ex. 8.5" x 11" folds to 3.667" x 8.5", and fits into a standard #10 envelope).

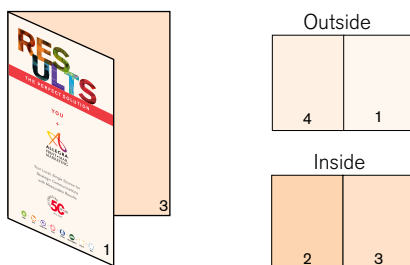


Paper Size	Panel #5	Panel #6	Panel #1
8.5" x 11"	3.625"	3.6875"	3.6875"
8.5" x 14"	4.625"	4.6875"	4.6875"
11" x 17"	5.625"	5.6875"	5.6875"

**Accordion fold** - All panels are the same size  
 Similar to a Z-fold, paper is folded in fourths/fifths, etc.



**Half fold / Bi-fold** - Paper is folded in half (ex. 11" x 17" folds to 8.5" x 11", 8.5" x 11" folds to 5.5" x 8.5", etc.).



Paper Size	(3) Panels	(4) Panels	(5) Panels
8.5" x 11"	3.667"	2.75"	—
8.5" x 14"	4.667"	3.5"	—
11" x 17"	5.667"	4.25"	5.6875"



**Ann Arbor Area:**  
 1283 Industrial Dr., Saline, MI 48176  
 734.944.1404 • Fax: 734.944.3603  
 customerservice@allegra.net

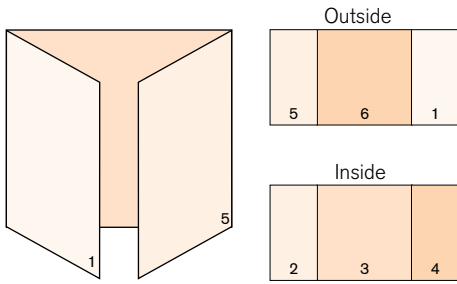
**Lansing/Jackson Area:**  
 517.749.3988  
 wsiegrist@allegra.net



www.allegra.net

**Gate-fold** - folding panels are slightly smaller than half

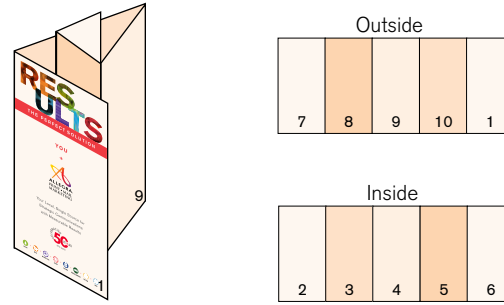
Paper is folded with the two outside panels each folding towards the middle. The two panels that fold in are slightly smaller.



Paper Size	Panel #5	Panel #6	Panel #1
8.5" x 14"	3.46875"	7.0625"	3.46875"
9" x 12"	2.96875"	6.0625"	2.96875"
11" x 17"	4.21875"	8.5625"	4.21875"

**Roll-fold** - each panel is incrementally smaller to fit inside each other

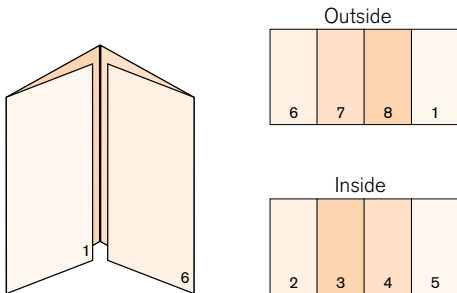
Paper is folded in fourths/fifths, etc., rolling in on each other (like a spiral).



Paper Size	Panel #7	Panel #8	Panel #9	Panel #10	Panel #1
9" x 16"	3.075"	3.1375"	3.2"	3.2625"	3.325"
11" x 17"	3.275"	3.3375"	3.4"	3.4625"	3.525"
11" x 24"	4.675"	4.7375"	4.8"	4.8625"	3.925"

**Closed Gate / Double Gate fold** - outside panels are slightly smaller than quarter

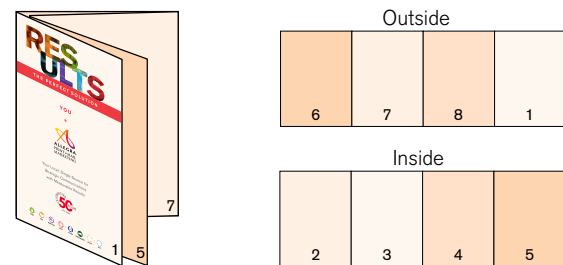
A gate fold that is folded in half.



Paper Size	Panel #6	Panel #7	Panel #8	Panel #1
8.5" x 14"	3.4375"	3.5625"	3.5625"	3.4375"
9" x 12"	2.9375"	3.0625"	3.0625"	2.9375"
11" x 17"	4.21875"	4.28125"	4.28125"	4.21875"

**Double Parallel fold** - Panel 2/6 are slightly smaller

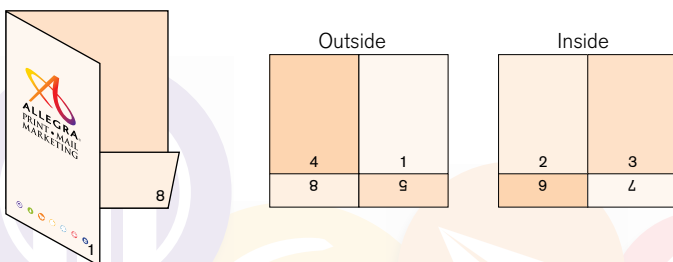
Paper is folded in half and then half again. The inside pages are slightly smaller than the outside pages.



Paper Size	Panels #6/2	Panels #7/3	Panels #8/4	Panels #1/5
8.5" x 11"	2.69"	2.77"	2.77"	2.77"
8.5" x 14"	3.437"	3.521"	3.521"	3.521"
11" x 17"	4.205"	4.265"	4.265"	4.265"

**Pocket Folder** - Pockets are folded upward and then the folder is folded in half.

Paper Size	Width	Height	Pocket
9"w x 12"h with 4" pockets	9"	12"	4"
Flat	18"	16"	
9"w x 12"h with 3" pockets	9"	12"	3"
Flat	18"	15"	



All measurements are in inches.  
All panel measurements are width of that panel.